

Systems engineering in waste disposal and environmental management



About us



Klettgau, Germany



Frutigen, Switzerland



Neuheim, Switzerland



Rixheim, France



Reggio Emilia, Italy

Bucher Hydraulics has been a leading provider of innovative solutions for hydraulic drives and control systems for over forty years.

Bucher Hydraulics works closely with its customers in developing very advanced machines that feature exacting technical demands and stringent quality standards. Even at the initial concept stage, we can help in the process of product optimisation by drawing on our many years of experience in hydraulic systems engineering.

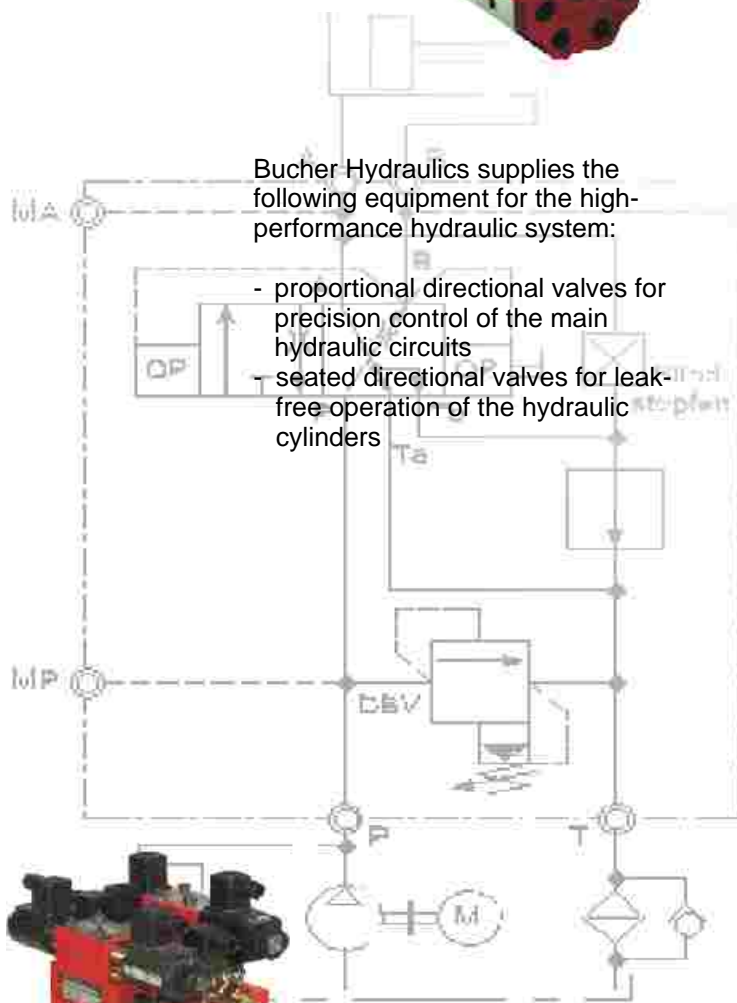
Today, Bucher Hydraulics is a business with over 1,000 employees and specialises in hydraulic systems and components for use in mobile and industrial machines.



Refuse collection vehicles



Whether side-loading, rear-loading or front-loading, modern refuse collection vehicles are extremely quiet, convenient, powerful and manoeuvrable. The operator benefits from significant advantages.



- intelligent electronics that facilitate effortless operation
- customised manifold block systems for the bin-emptying operation
- external gear pumps to power the bin-emptying mechanism



Salt / grit spreaders

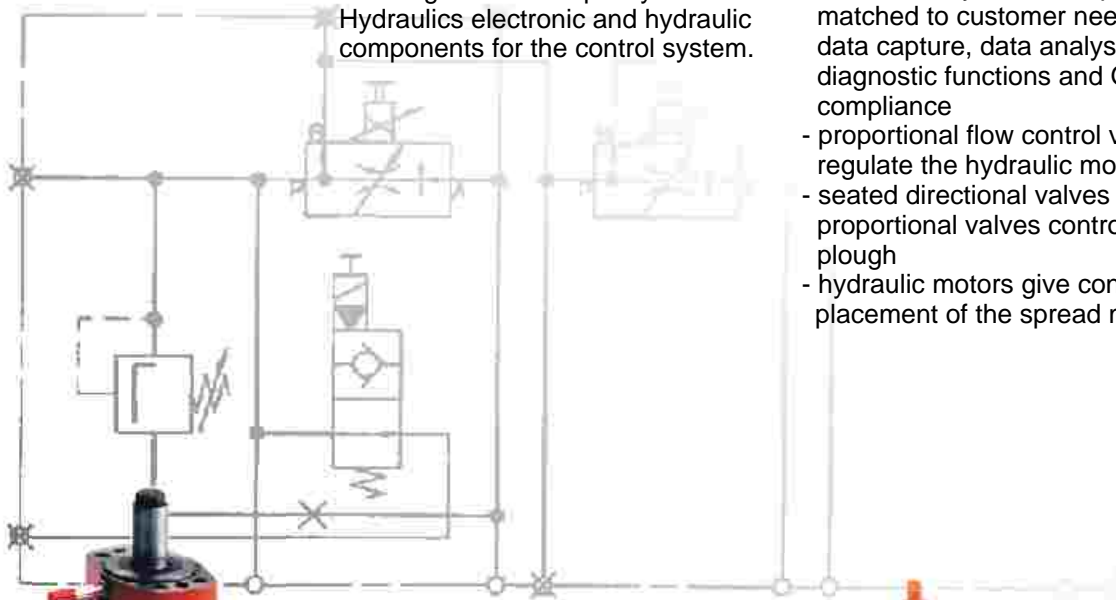


Well-aimed delivery of accurately controlled quantities of salt / grit is the main task of an electronic control system for winter road management. In addition to this core functionality, several other factors also concern vehicle builders and users. Foremost is the question of costs, but performance and system flexibility are also crucial, as is the assurance that the system is future-proof. Another requirement that has become very significant in recent years is integration in the fleet management system.



Vehicle manufacturers with the most exacting standards specify Bucher Hydraulics electronic and hydraulic components for the control system.

- intelligent electronics ensure that the control systems are perfectly matched to customer needs, to data capture, data analysis, diagnostic functions and GPS-compliance
- proportional flow control valves regulate the hydraulic motors
- seated directional valves and proportional valves control the plough
- hydraulic motors give controlled placement of the spread material



Multi-attachment vehicles

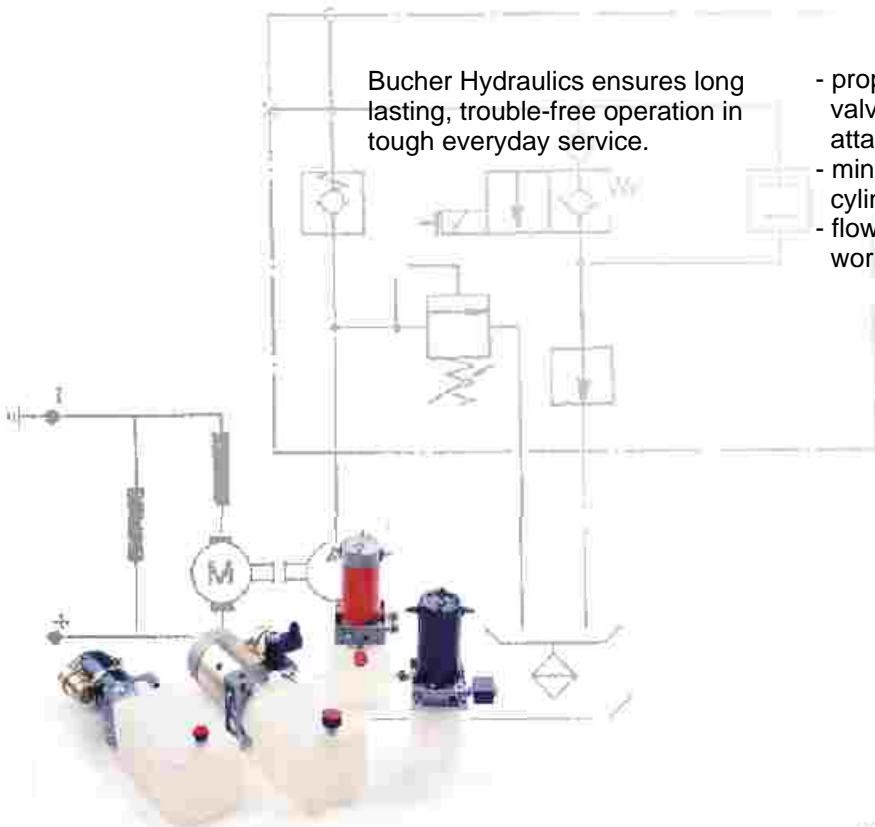


Along with high levels of flexibility and efficiency, the demands placed on the multi-attachment vehicle of the future also focus on good ergonomics and outstanding driving/working characteristics.



Bucher Hydraulics ensures long lasting, trouble-free operation in tough everyday service.

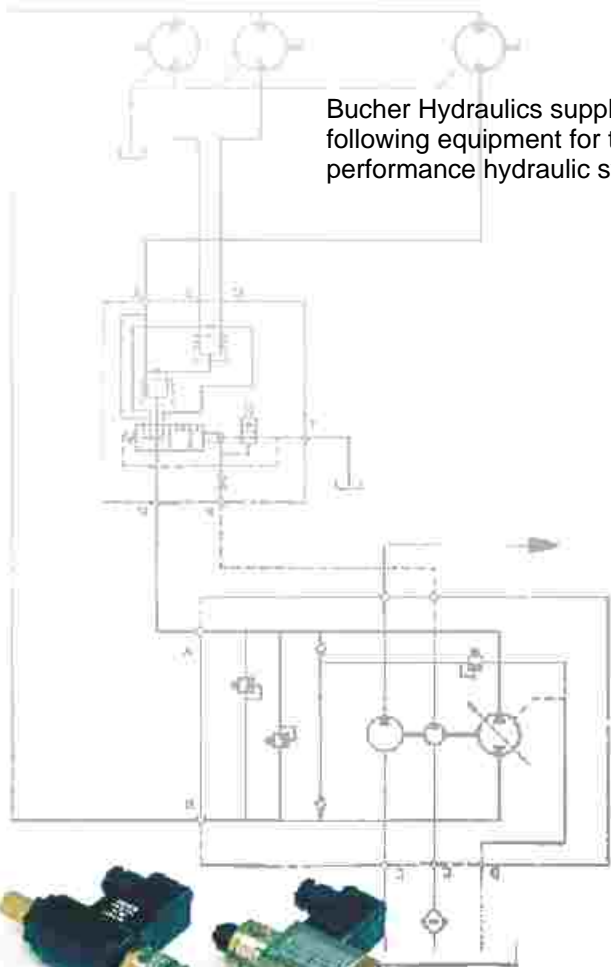
- proportional- and on/off directional valves give precise control of the attachments
- mini power packs supply the cylinder that tips the platform body
- flow control valves regulate the working speeds



Compost handling



Modern compost handling machines are in continuous operation day after day. Operators demand very high levels of reliability and flexibility, and convenient operation.



Bucher Hydraulics supplies the following equipment for the high-performance hydraulic system:

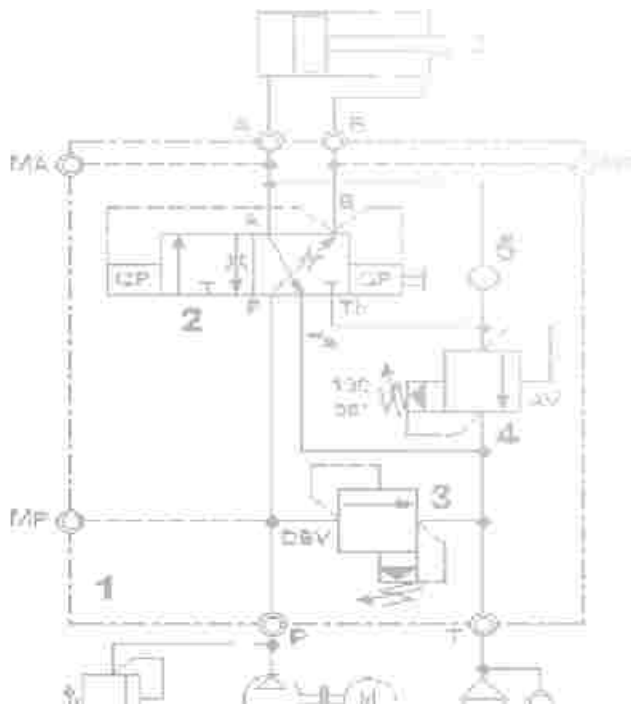
- proportional directional valves for precision control of the main hydraulic circuits
- seated directional valves for leak-free operation of the hydraulic cylinders
- flow control valves for regulating the speed of conveyor belts and drives
- hydraulic motors to ensure that the drive systems have adequate reserves of power
- mini power packs for supplying the hydraulic system with the required flows



Wood shredders



Thanks to very robust design allied with sound engineering practices, the operator can achieve a high work rate, but in a user-friendly manner. Modern shredders are also expected to offer the highest possible levels of safety while needing only simple servicing.



Bucher Hydraulics plays an important part in meeting these criteria.

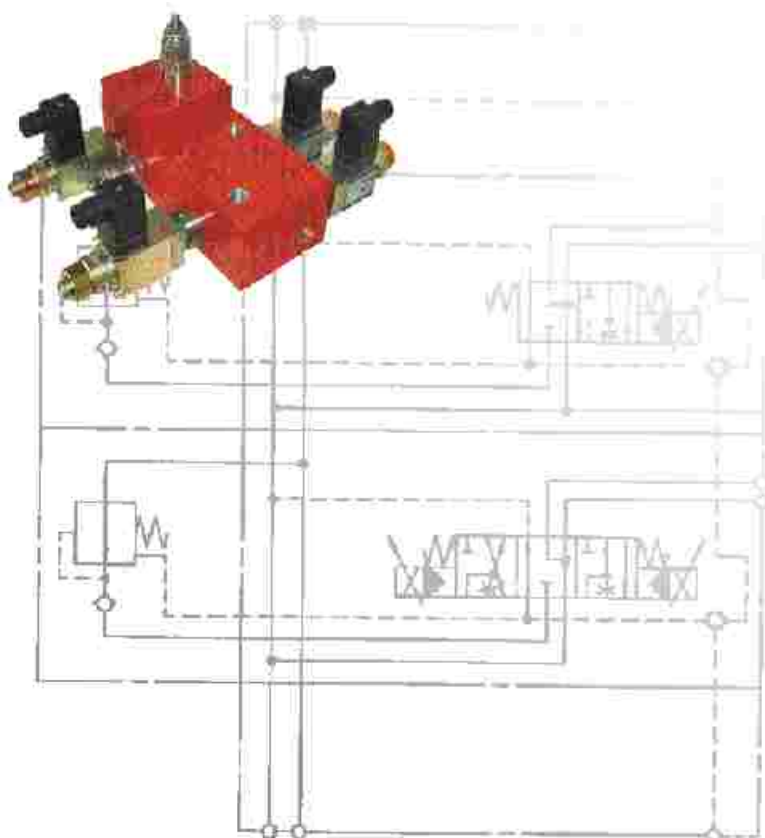
- the feed rollers, feed belt and shredding rollers are driven by powerful hydraulic motors
- the main hydraulic circuits are controlled by directional valves that, in partnership with the electronics, form the safety circuits
- cartridge-type flow control valves regulate the speed of the hydraulic motors



Road sweepers



Easily adjustable brushing width, manoeuvrability, safety, long service life, economy and convenience are the features that the operator expects in the road sweeper of the future.



Exceptional demands are placed on each link in the chain, including the electro-hydraulic drive and control system from Bucher Hydraulics.

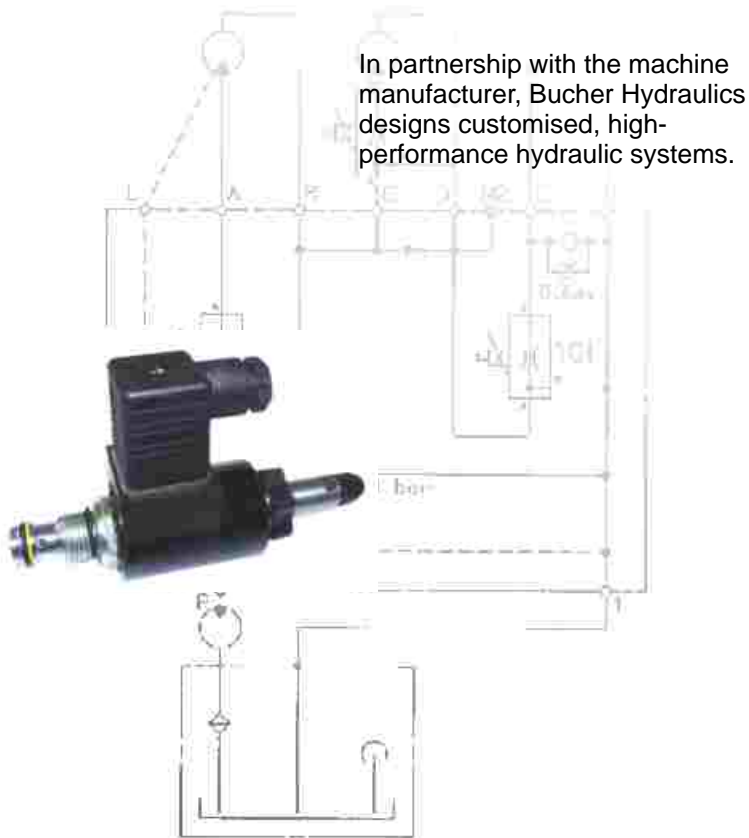
- proportional valves ensure precise control of the brush and the suction fan
- hydraulic motors for the brush drive
- seated directional valves give leak-free operation of the hydraulic cylinders



Drain cleaning machines



Drains and sewers must be inspected and maintained at regular intervals nowadays. Costs are increasing, as is the need for higher performance. These factors are placing new demands on the manufacturers of drain cleaning machines.



- proportional valves give precision control of the main hydraulic functions
- hydraulic motors power the hose reel
- seated directional valves give leak-free operation of the hydraulic cylinders



Static waste compactors

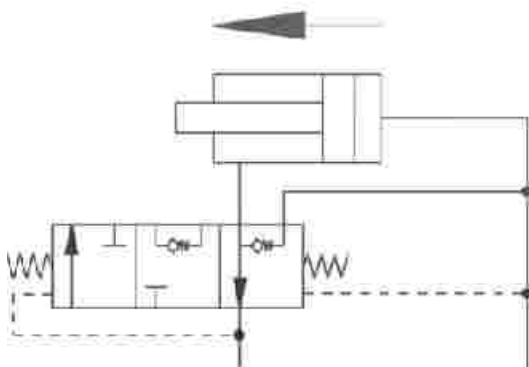
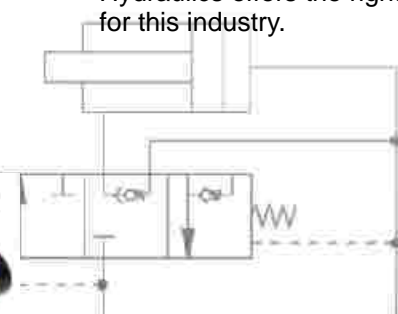


To comply with the safety requirements of the Employers Liability Insurance Associations and the Health and Safety authorities, static waste compactors must operate powerfully but quietly. They must also have a long service life.



Where hydraulic drives and control systems are concerned, Bucher Hydraulics offers the right concepts for this industry.

- quiet-running internal gear pumps generate the hydraulic flows required by the application
- seated valves and proportional valves control the main hydraulic circuits
- special-purpose valves control the compaction sequence



Everything at a glance

Product	Function / Construction	Series	Max. operating pressure (bar)	Displacement cm ³ /rev
Pumps	Internal gear pumps	QX	320	3 - 498
	External gear pumps	AP	220	0,25 - 93
Power units	Compact power units	UP 100 / 50 / 25	210	0,25 - 10
	Motor/pump sets	ET	220	0,25 - 22
Motors	External gear motors	APM	220	0,5 - 93
	Gerotor motors	BR-BM	280	52 - 2093
	Radial piston motors	BB	400	250 - 6300
	Internal gear motors	QXM	400	5 - 500
Directional valves	Monoblock type:			Displacement cm ³ /rev
	- manually operated + on/off solenoid	HDM	400	40 - 100
	- manually operated + prop. solenoid	MU	350	50 - 450
	Sectional type:			Nom. flow. l/min
	- manually operated; on/off solenoid and proportional solenoid	HDS	350	45 - 180
	- manually operated; on/off solenoid and proportional solenoid	L.8S / LV	280 / 420	100 / 250
	- manually operated + prop. solenoid	S	350	100 - 450
	Plate type:			
	- manually operated + proportional solenoid	PV	350	50 - 400
	- solenoid directional valves	W	315	ISO 2 - 5
Stacking valves	WE	350	ISO 2 - 5	
Cartridge valves	W	210 - 350	5 - 10 mm	
Flow control valves	Flow dividers	MTDA	315	4 - 250
	Differential lock valves	MT..DV.	420	25 - 200
	Flow control valves			
	- line mounting	MTKA / MTQA / MTCA	315	70 + 80
	- stack mounting	SM	315	ISO 2 - 7
- cartridge type	SR3C / M	315	10 - 63 / 6 - 10 mm	
Pressure control valves	Stack mounting	SD	315	ISO 2 - 7
	Cartridge type	D	20 - 450	2 - 16 mm
Check valves	Stack mounting	SR	315	ISO 2 - 7
	Cartridge type	R	210 - 420	4 - 16 mm
Safety valves	Load control valves	LB / Cindy / BBV	420	50 - 500
	Hose burst valves	ESV / RS / RBA	400	40 - 400
	Travel brake valves	FBVG	450	300
	Load holding valves	REFUVA	450	350
Special valves	Slewing gear valves	DLHV	350	15
	Fast-advance cartridges	EGP	350	250
	Seat valves: sectional design	SVH04	210	20
	Seat valves, monoblock type	WSH03	210	25

Open- and closed-loop electronics for mobile hydraulic systems

www.bucherhydraulics.com

Germany
Bucher Hydraulics GmbH
Industriestrasse 1
D-79771 Klettgau
Tel.: +49 7742 85 20
Fax: +49 7742 71 16
info.de@bucherhydraulics.com

Denmark
Bucher Hydraulics
Sales Office
Eskærvænget 64
DK-5700 Svendborg
Tel.: +45 62 800 799
Fax: +45 62 800 798
mikkel.falk@bucherhydraulics.com

France
Bucher Hydraulics SAS
50 Rue de l'Île Napoléon
F-68173 Rixheim-Cedex
Tel.: +33 389 64 22 44
Fax: +33 389 65 28 78
info.fr@bucherhydraulics.com

United Kingdom
Bucher Hydraulics Ltd.
Unit 9, Eastboro Fields
Hemdale, Nuneaton
GB-Warwickshire CV11 6GL
Tel.: +44 2476 35 35 61
Fax: +44 2476 35 35 72
info.uk@bucherhydraulics.com

Italy
Bucher Hydraulics S.p.A
Via P. Coletta n. 5
I-42100 Reggio Emilia
Tel.: +39 0522 92 84 11
Fax: +39 0522 51 32 11
info.it@bucherhydraulics.com

Netherlands
Bucher Hydrauliek B.V.
Postbus 222
NL-2700 AE Zoetermeer
Wattstraat 26 c
NL-2723 RC Zoetermeer
Tel.: +31 79 34 26 244
Fax: +31 79 34 26 288
info.nl@bucherhydraulics.com

Austria
Bucher Hydraulics Ges.m.b.H.
Breinbergstrasse 1
A-5202 Neumarkt a. W.
Tel.: +43 6216 44 97
Fax: +43 6216 44 974
info.at@bucherhydraulics.com

Switzerland
Bucher Hydraulics AG Frutigen
Schwandstrasse 25
Postfach 93
CH-3714 Frutigen
Tel.: +41 33 67 26 111
Fax: +41 33 67 26 103
info.ch@bucherhydraulics.com

China
Suzhou Bucher Hydraulics
Co., Ltd
No. 168, Shexing Road
Lili Town, Wuijiang City
Post Code: 215214
P.R. China-Jiangsu Province
Tel.: +86 512 6 322 12 99
Fax: +86 512 6 322 10 33
info.sh@bucherhydraulics.com

Suzhou Bucher Hydraulics Co.,Ltd
Beijing Office
Room 1211, Tower A
Qiancun Commercial Mansion,
Anzhenxili, Chaoyang District
P.R. China-100029 Beijing
Tel.: +86 10 64 44 32 38
Fax: +86 10 64 44 32 35
info.bj@bucherhydraulics.com

USA
Bucher Hydraulics, Inc.
8920 58th Place Suite 200
Kenosha
WI 53221, USA
Tel.: +1 262 605 8280
Fax: +1 262 605 8278
info.wi@bucherhydraulics.com

Product Centre,
Elevator Hydraulics
Bucher Hydraulics AG
Industriestrasse 15
CH-6345 Neuheim
Tel.: +41 41 75 70 33 3
Fax: +41 41 75 51 64 9
info.nh@bucherhydraulics.com

